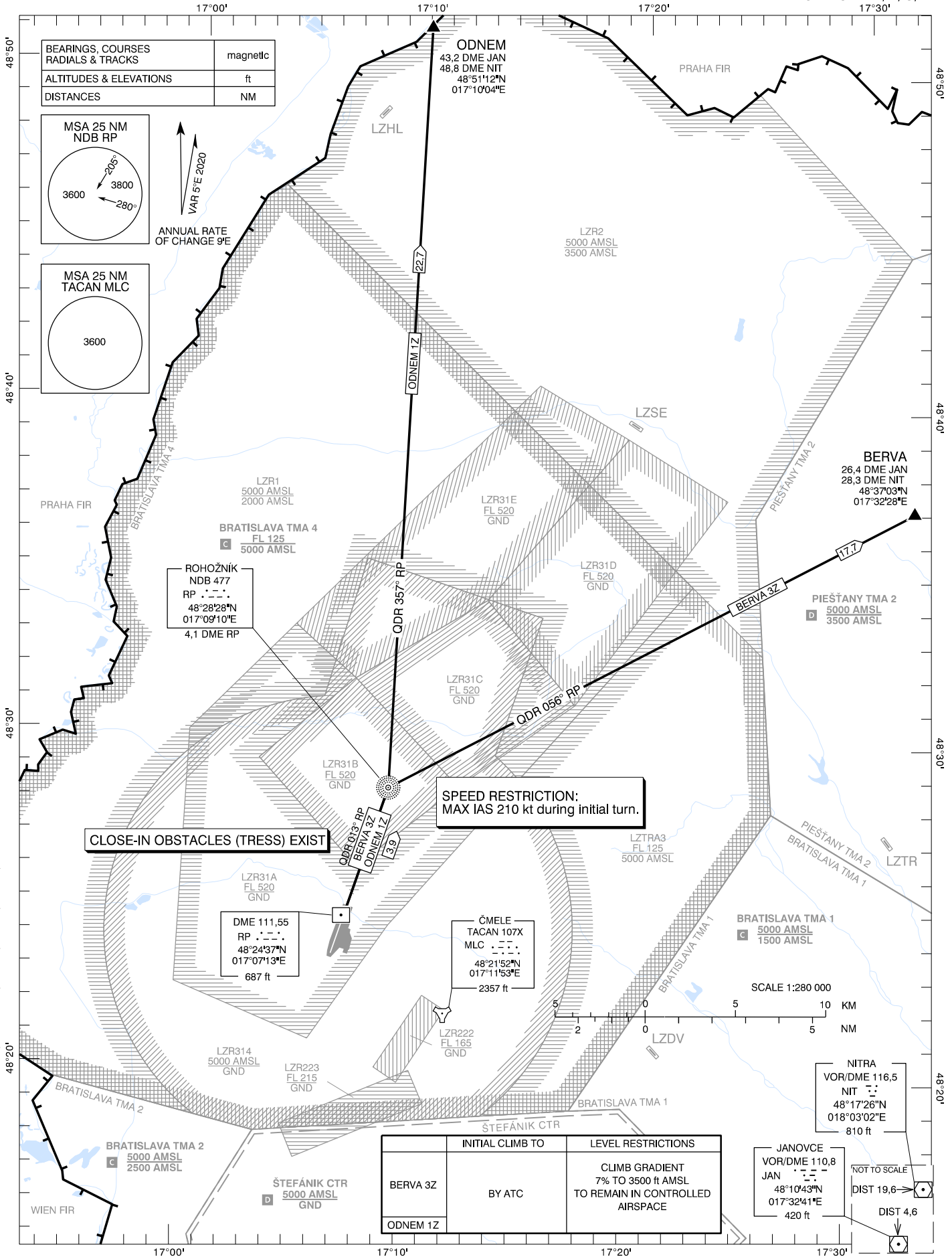


STANDARD DEPARTURE CHART -
INSTRUMENT (SID) - ICAO

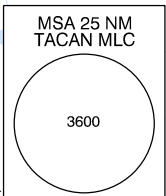
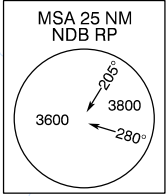
TRANSITION ALTITUDE
10 000 ft

MALACKY RADAR 120,750 (259,625)
MALACKY TOWER 129,575 (120,750)

MALACKY (LZMC)
SID RWY 01
ACFT CAT A/B/C/D



BEARINGS, COURSES RADIALS & TRACKS	magnetic
ALTITUDES & ELEVATIONS	ft
DISTANCES	NM



VAR 5°E 2020
ANNUAL RATE
OF CHANGE 9'E

ROHOŽNÍK
NDB 477
RP
48°28'28"N
017°09'10"E
4,1 DME RP

DME 111,55
RP
48°24'37"N
017°07'13"E
687 ft

ODNEM
43,2 DME JAN
48,8 DME NIT
48°51'12"N
017°10'04"E

BERVA
26,4 DME JAN
28,3 DME NIT
48°37'03"N
017°32'28"E

PIEŠŤANY TMA 2
5000 AMSL
3500 AMSL

BRATISLAVA TMA 1
5000 AMSL
1500 AMSL

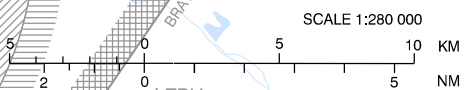
NITRA
VOR/DME 116,5
NIT
48°17'26"N
018°03'02"E
810 ft

JANOVICE
VOR/DME 110,8
JAN
48°10'43"N
017°32'41"E
420 ft

CLOSE-IN OBSTACLES (TRESS) EXIST

SPEED RESTRICTION:
MAX IAS 210 kt during initial turn.

	INITIAL CLIMB TO	LEVEL RESTRICTIONS
BERVA 3Z	BY ATC	CLIMB GRADIENT 7% TO 3500 ft AMSL TO REMAIN IN CONTROLLED AIRSPACE
ODNEM IZ		



CHANGES: LZR131A and LZR131B withdrawn; new LZR31A, LZR31B, LZR31C, LZR31D, LZR31E established